

Design includes a pocket for a filter!

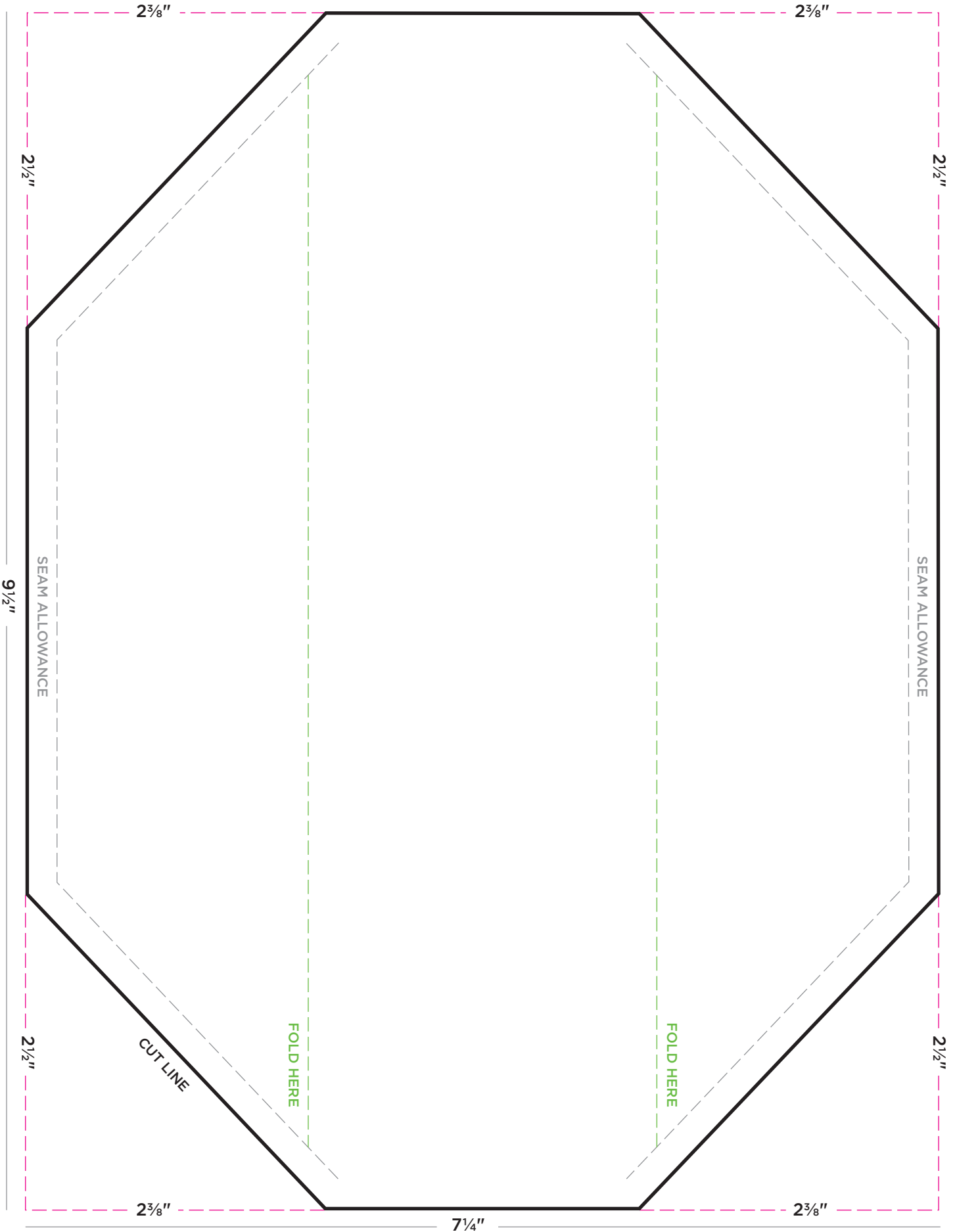
easy cotton Face Mask

Disclaimer: This is not a medical-grade mask.



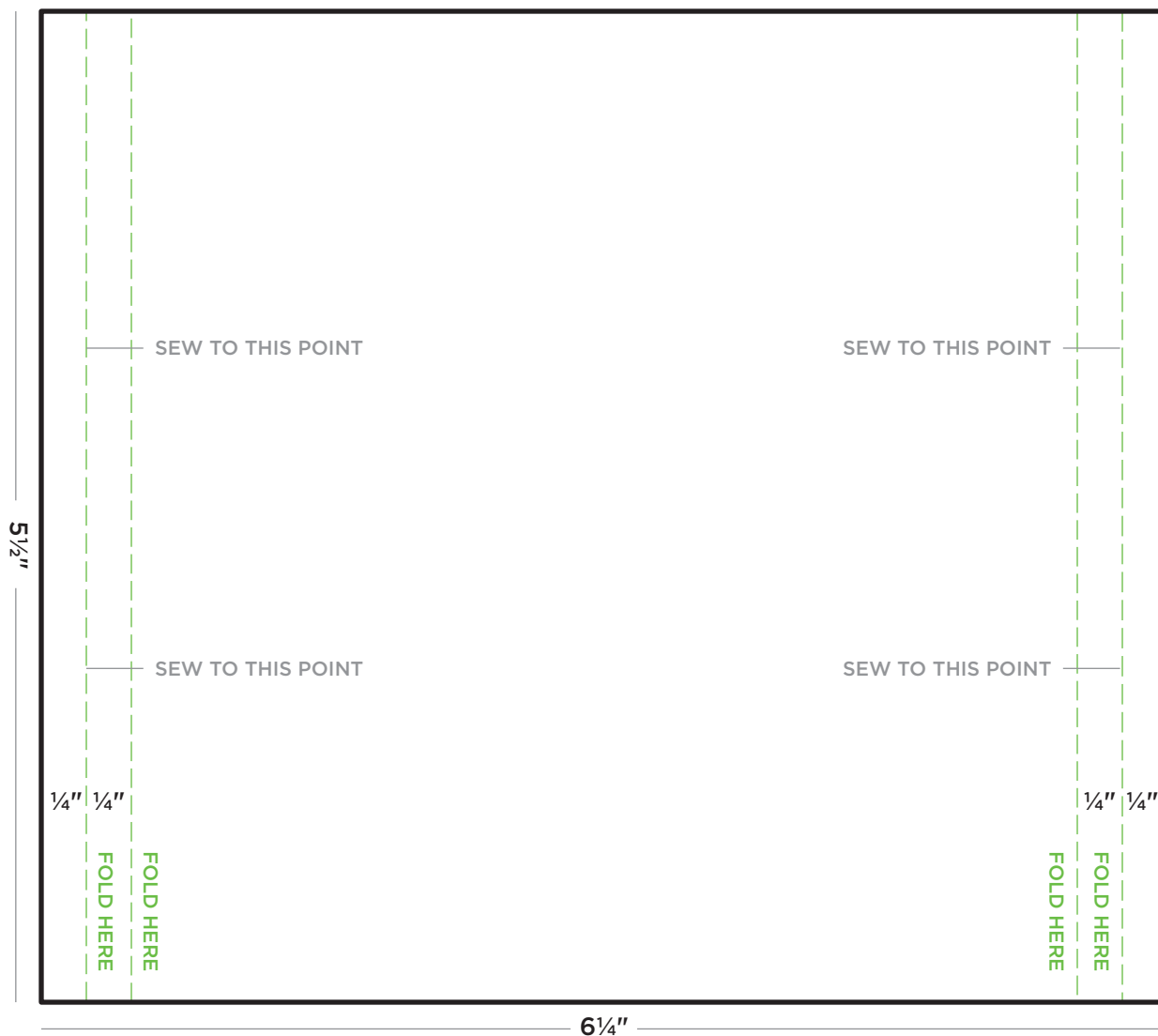
HOBBY LOBBY®

FACE MASK PATTERN WITH LINING (1 of 2)



FACE MASK PATTERN

WITH LINING (2 of 2)



LINING FABRIC
(CUT 2)

SUPPLIES:

- Fabric for mask
- Fabric for filter pocket
- Elastic cording

STEPS:

1. Cut two octagon-shaped pieces of fabric.
2. Place fabric pieces with right sides together. Pin around edges, leaving short sides open. Stitch with $\frac{1}{4}$ " seam, turn right side out, and press.
3. Measure 2" up from bottom edge and mark. Repeat with top edge. Fold fabric on marks and press. Top stitch.
4. Cut two pieces of pocket fabric ($6\frac{1}{4}$ x $5\frac{3}{8}$ "). Fold long sides under $\frac{1}{4}$ ". Then fold under again. Stitch folds down.
5. Pin pocket pieces with wrong sides together. Then measure down 1" on each long side and mark. Stitch from each edge to mark, with a $\frac{1}{8}$ " seam.
6. Place pocket on mask, with right sides together, and pin top and bottom edges. Stitch across, turn fabric right side out, and press. Top stitch along top and bottom of mask.
7. Fold each side edge over $\frac{1}{4}$ " twice to form casing. Stitch close to edges. Thread cording through casing and tie off, hiding knot in casing.
8. Insert filter of your choice. Be sure to use non-woven material such as interfacing or felt.

Note: We used elastic cording for our mask, but you could alter the design to use another kind of elastic, bias tape or fabric ties.

