

scrub-style

Hat



Sew your own
**STYLISH
HEADGEAR!**



Disclaimer: This is not a
medical-grade scrub hat.

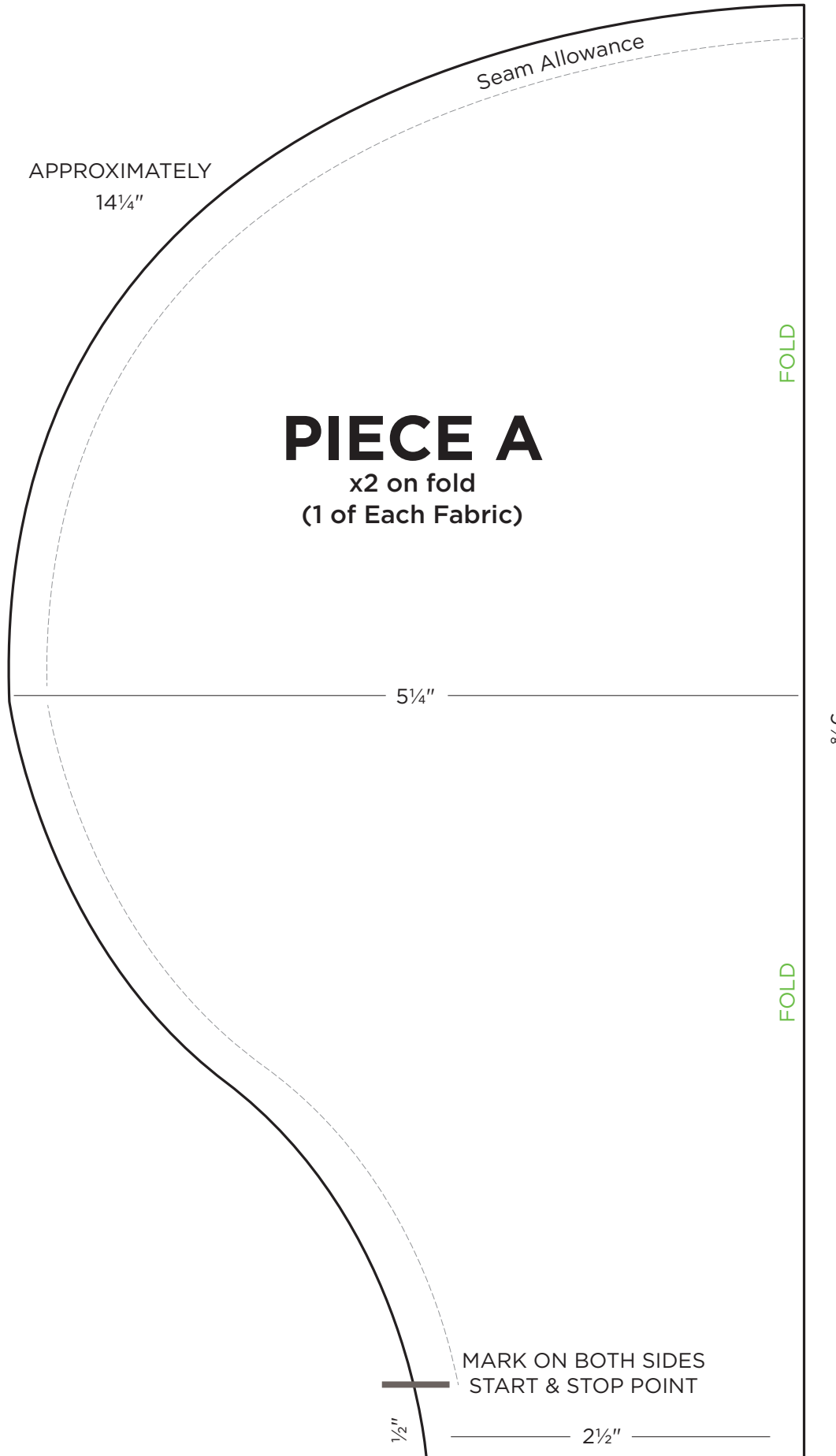


HOBBY LOBBY®

SCRUB HAT PATTERN

(1 of 4)

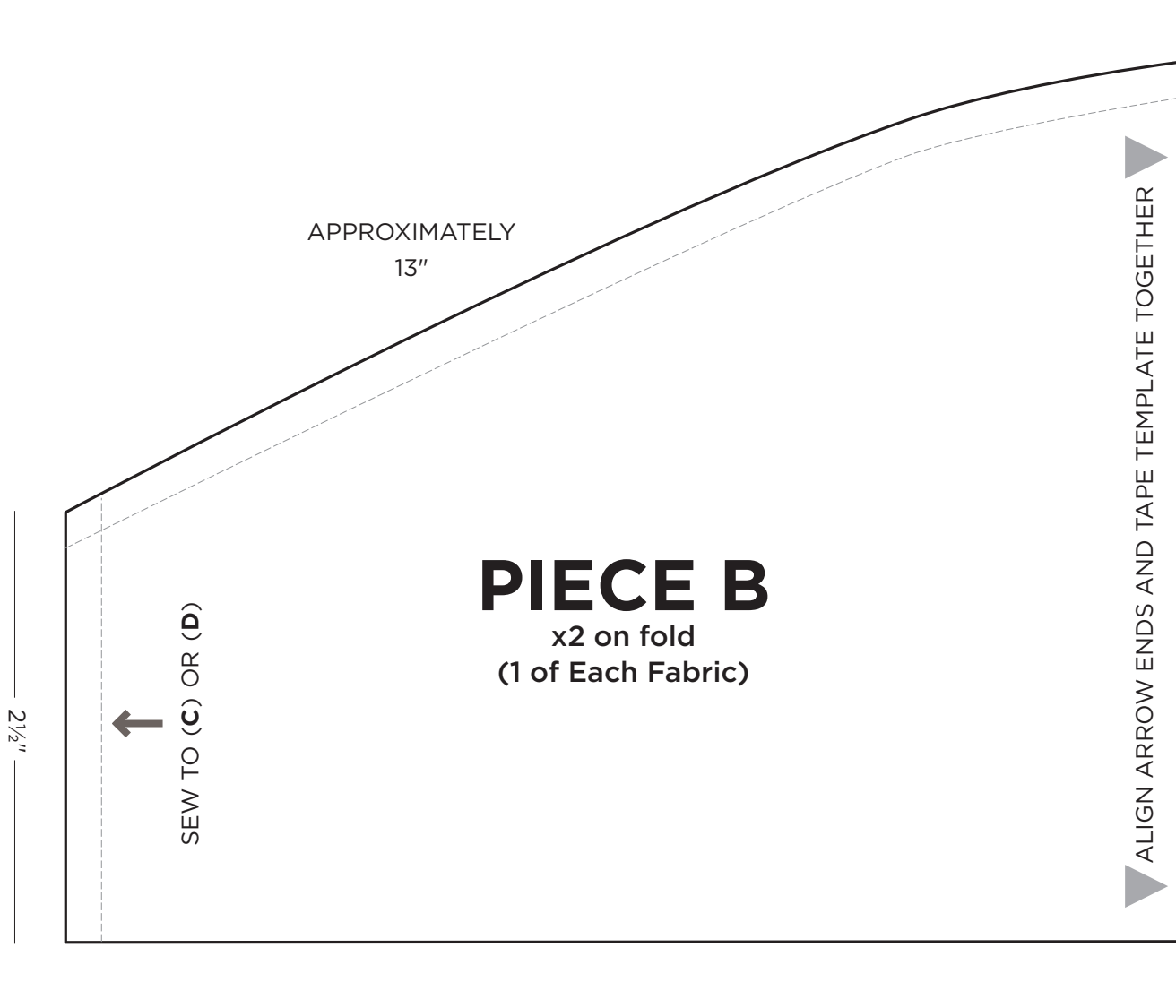
SCALED AT 100%



SCRUB HAT PATTERN

(2 of 4)

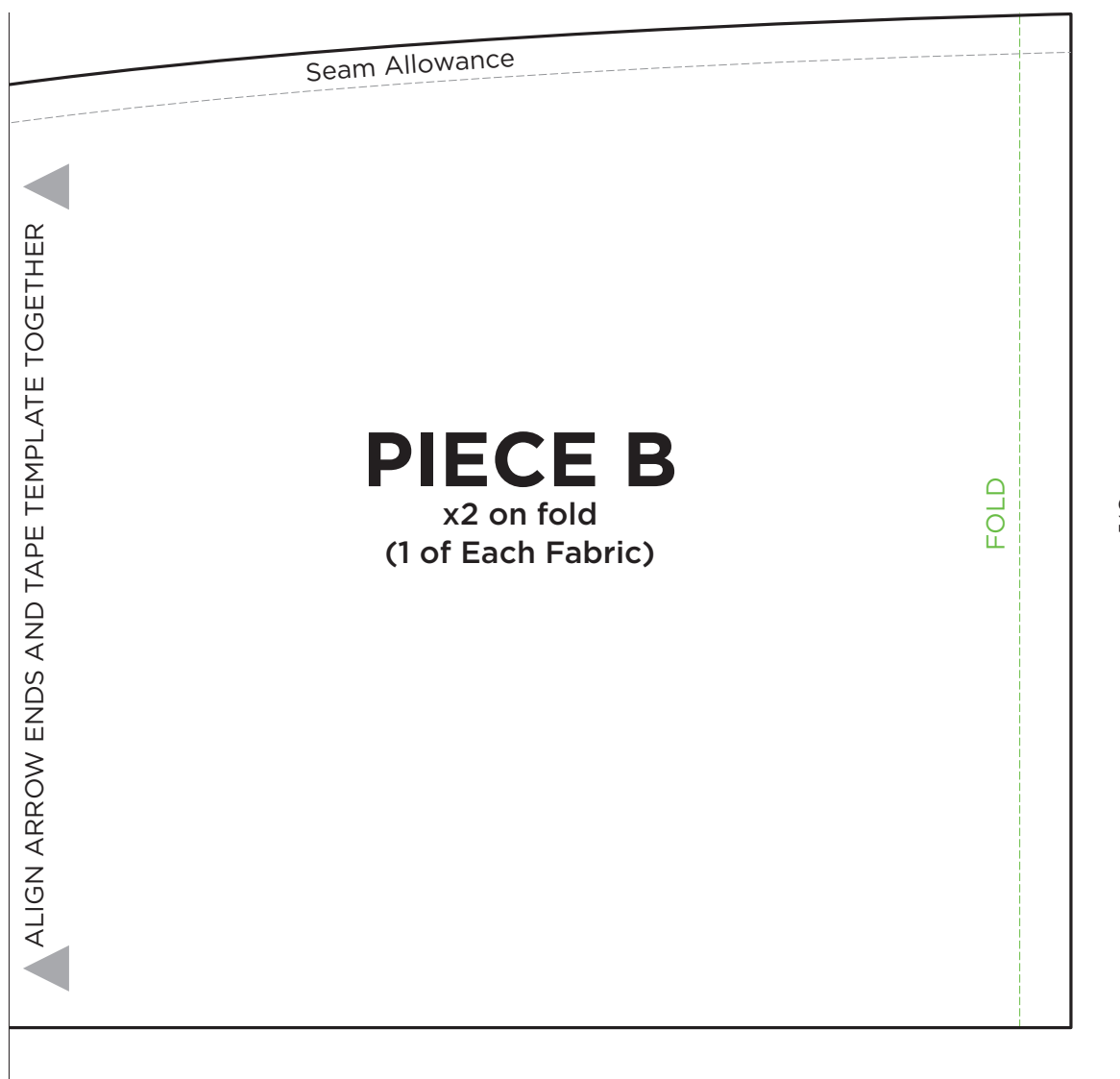
SCALED AT 100%



SCRUB HAT PATTERN

(3 of 4)

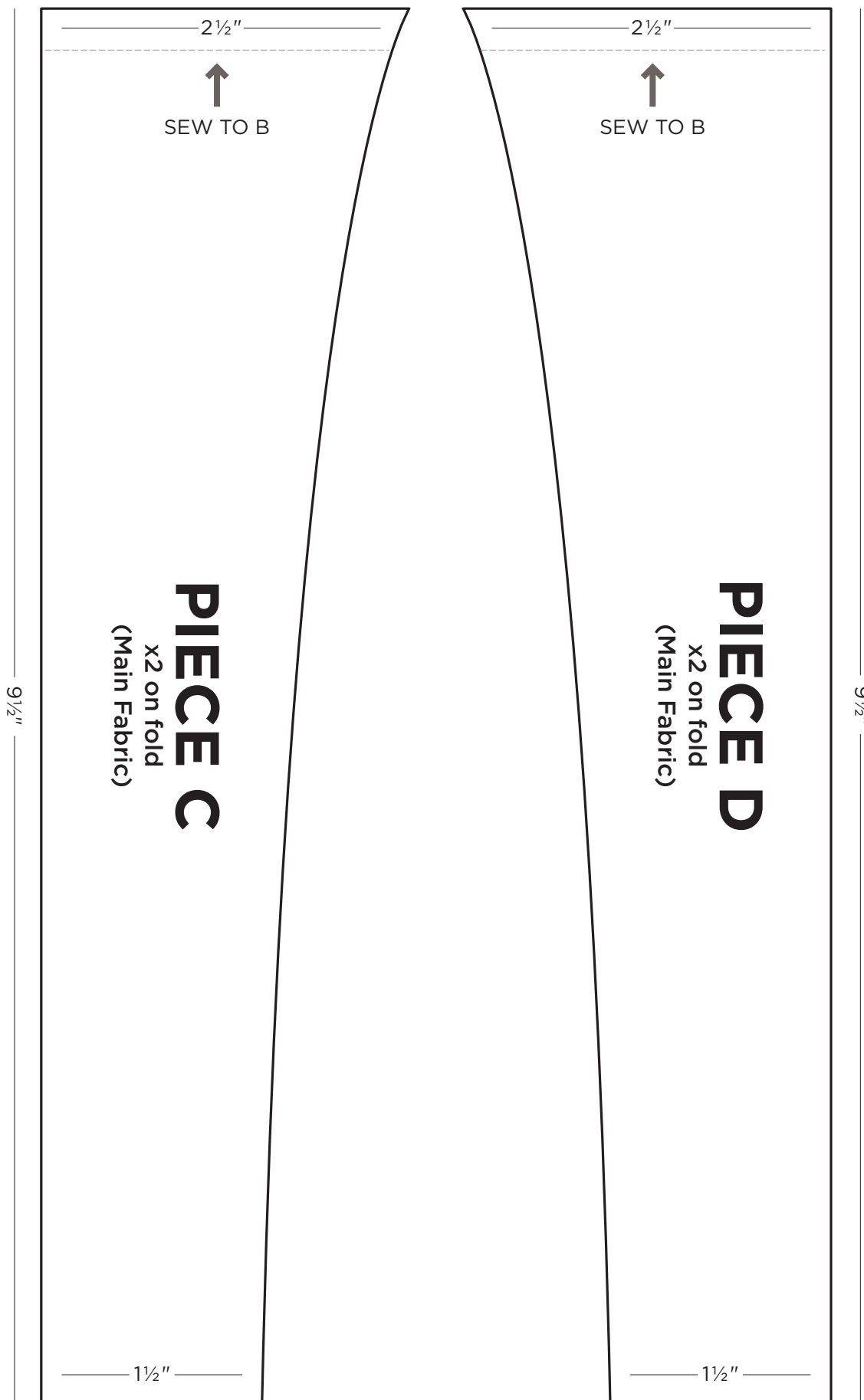
SCALED AT 100%



SCRUB HAT PATTERN

(4 of 4)

SCALED AT 100%



SUPPLIES:

- Fabric - ½ yd.
- Elastic

STEPS:

1. Cut fabric according to provided templates.
2. Place one piece C and one piece D on piece B, with right sides together, lining up edges as shown. Pin and stitch with ¼" seam allowance. Press seams, and repeat step for remaining B, C and D pieces.
3. Align piece A with piece B, from step two. Pin and sew around, with ¼" seam allowance, starting and stopping where template indicates. Clip curve and turn right side out. Repeat for remaining pieces.

4. Place one piece inside other, with right sides together. Pin straps and curve of cap as shown, leaving opening between ties. Sew with ¼" seam allowance and turn right side out. Press.
5. Fold opening between ties under and pin edges together. Stitch line ½" above pinned edge. Remove pins and insert 3" piece of elastic. Sew ends of elastic to ends of opening. Pin opening and sew pinned edge.
6. Top stitch around entire hat.

Note: We used ¼" elastic, but you could alter the project to use a different width.

